

A New ODF Forest Management Plan (FMP) “An Opportunity for Oregon”

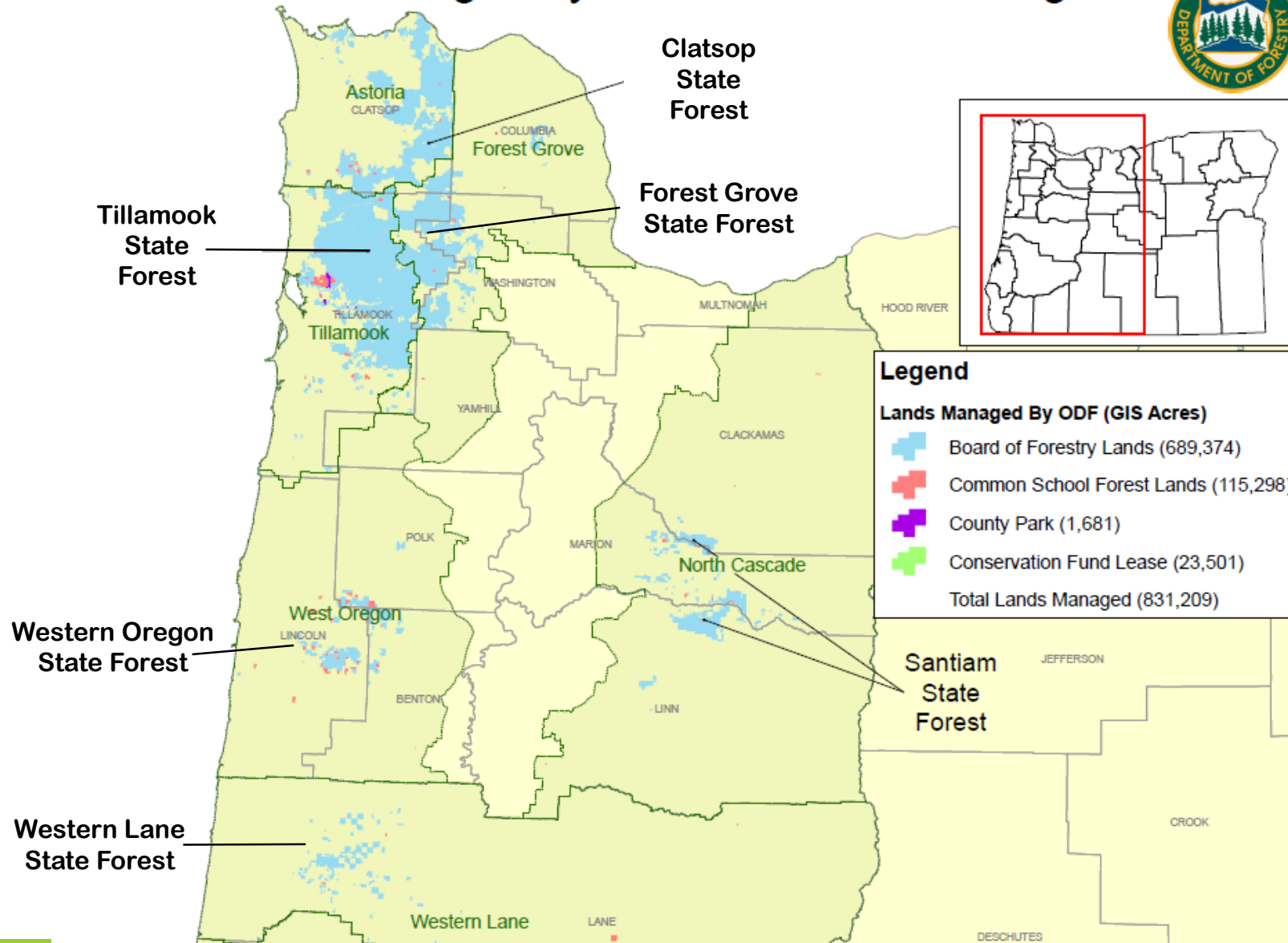
“NEW ODF MANAGEMENT PLANS MUST ACHIEVE INCREASES IN
BOTH FINANCIAL VIABILITY AND CONSERVATION OUTCOMES”

Areas covered by the new FMP

Six ODF Districts—609,500 acres

- Clatsop
- Tillamook
- Forest Grove
- Santiam
- Western Oregon
- Western Lane

Lands Managed by the State Forests Program



Harvest and Annual Growth

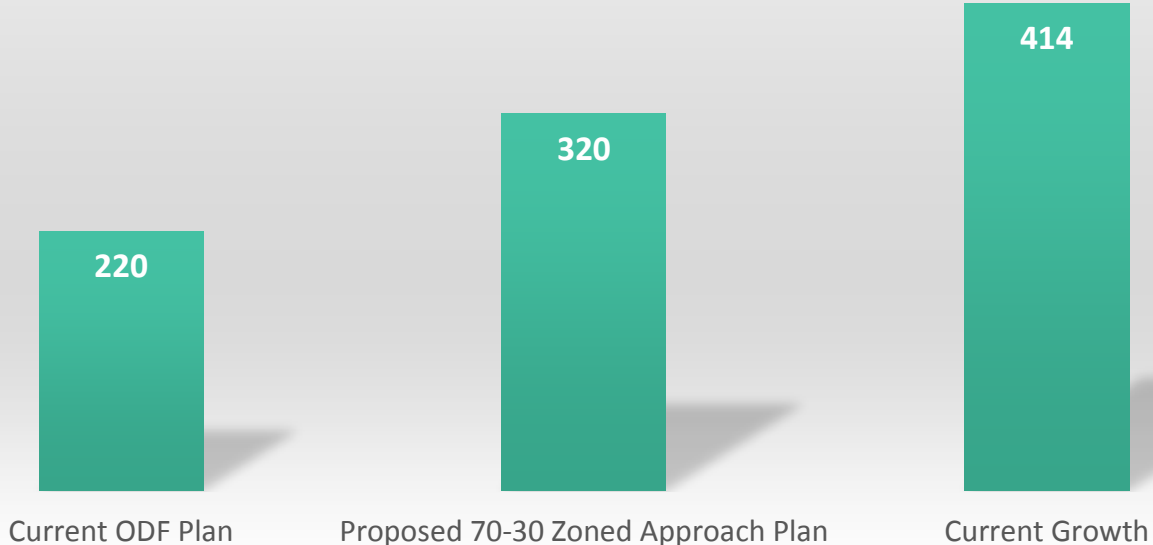
Current ODF Plan - harvests 220 MMBF = 53% of the annual growth

The 70/30 Plan - harvests 320 MMBF = 77% of the annual growth

*Current growth rate = 414 MMBF/year (per ODF data)

Annual Growth Versus management Plans MMBF/Year

Annual Growth of NW State Forest: 414 MMBF



Annual Revenue Increase per Year Millions \$/Year

Current
Management Plan

-\$7

Proposed 70-30
Zoned Approach
Plan

\$35

100% Timber
Management

\$54



Conservation Fund

Establish a conservation fund - \$10/MBF tax on incremental harvest – potential of \$10,000,000 over 10 years

Establish a Western Oregon priority for Habitat Enhancement Projects/Research and monitoring

Develop a Board with all Stakeholders and agencies to steer the Projects

Concluding thoughts

Board of Forestry and ODF are developing models
Complete by 12-31-2016

All Stakeholders are involved
Counties
Industry
Conservation and Environmental Groups
General Public - Rural and Urban

Huge opportunity for Rural and Urban Oregonians